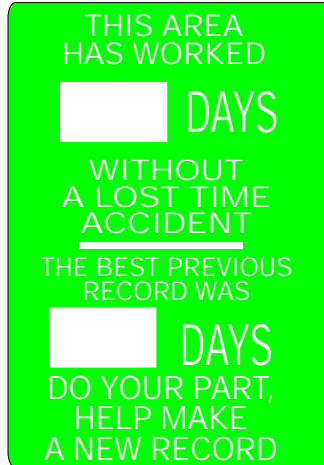




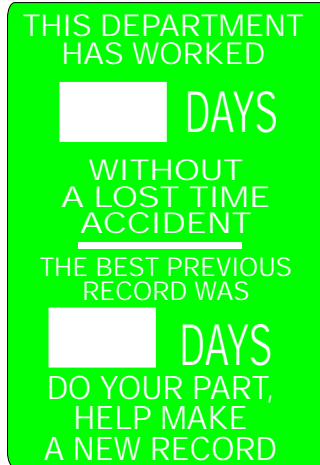
LOST TIME ACCIDENT SIGNS ARE MADE OF ALUMINUM, 28"x20" (INCHES) AND HAVE A DRY ERASE AREA FOR DRY MARKERS OR A STEEL PLATE (MAGNETIC AREA) FOR MAGNETIC NUMERALS.



28x20 A-L- DRY ERASE LTA-710751
A-L- STEEL PLATE LTA-710757



28x20 A-L- DRY ERASE LTA-810951
A-L- STEEL PLATE LTA-810957



28x20 A-L- DRY ERASE LTA-811051
A-L- STEEL PLATE LTA-811057



28x20 A-L- DRY ERASE LTA-812351
A-L- STEEL PLATE LTA-812357



28x20 A-L- DRY ERASE LTA-710851
A-L- STEEL PLATE LTA-710857



28x20 A-L- DRY ERASE LTA-710951
A-L- STEEL PLATE LTA-710957



28x20 A-L- DRY ERASE LTA-812451
A-L- STEEL PLATE LTA-812457



28x20 A-L- DRY ERASE LTA-812551
A-L- STEEL PLATE LTA-812557

ADDITIONAL MAGNETIC NUMBERS



2½" ORANGE MAGNETIC NUMBERS FOR ABOVE MAGNETIC SIGNS
MG 0-9



PART#
LTA (Dry-Erase w/one dry erase pen - PEN-DR)
LTA (Magnetic w/two sets of MG 0-9 for LTA-710757, LTA-710857 & LTA-710957 and four sets of MG-09 for all others)

ADDITIONAL PENS



Dry erase black marking pen for writing on Lost Time Accident signs.

PEN-DR

Dial Safe

Lost Time Accident Signs

Simply turn the dial to change the number of "SAFE DAYS" in your department.

Available in two sizes: 36"x24" and 28"x20"
Signs are manufactured of heavy duty plastic.



28"x20" LTA-719853

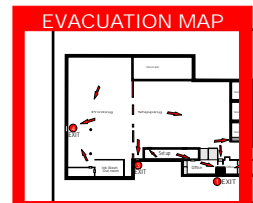
PART#
LTA-719853 (28x20)
LTA-71993 (36x24)



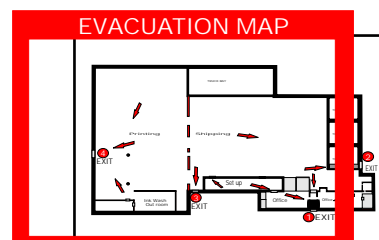
36"x24" LTA-71993

Map Holder

Insert your printed map into the map holder. Two adhesive strips on back for mounting to clean flat surface.



EM-085
10" X 12"
Clear Acrylic
for 8.5" x 11" map



EM-017
12.5" X 18.5" Clear Acrylic for 11" x 17" map

- If You Don't See It Just Ask!
- Custom Jobs Our Specialty...Please Call For A Quote!

NOTICE

THE SIGNS OF A SAFE INDUSTRY



<p>NOTICE</p> <p>ALL EMPLOYEES WHOSE WORK DOES NOT REQUIRE THEM TO ENTER THIS AREA MUST KEEP OUT</p>	<p>NOTICE</p> <p>ALL LUNCH BOXES, PACKAGES, BAGS, PURSES, ETC. ARE SUBJECT TO INSPECTION</p>	<p>NOTICE</p> <p>ALL TRUCK DRIVERS MUST SIGN IN BEFORE PROCEEDING PAST THIS POINT</p>	<p>NOTICE</p> <p>ALL TRUCK DRIVERS MUST WAIT IN DESIGNATED AREA</p>	<p>NOTICE</p> <p>ALL VEHICLES AND PERSONNEL ENTERING OR LEAVING THE PREMISES SUBJECT TO SEARCH</p>	<p>NOTICE</p> <p>ALL VEHICLES ENTERING OR LEAVING THE PREMISES SUBJECT TO SEARCH</p>	<p>NOTICE</p> <p>AUTHORIZED PERSONNEL ONLY</p>
<p>3x5 VPO N-000414 7x10 AL N-000421 FG N-000422 PL N-000423 VPO N-000424 10x14 AL N-000431 FG N-000432 PL N-000433 VPO N-000434 14x20 AL N-000441 PL N-000443 VPO N-000444</p>	<p>3x5 VPO N-000614 7x10 AL N-000621 FG N-000622 PL N-000623 VPO N-000624 10x14 AL N-000631 FG N-000632 PL N-000633 VPO N-000634 14x20 AL N-000641 PL N-000643 VPO N-000644</p>	<p>3x5 VPO N-000714 7x10 AL N-000721 FG N-000722 PL N-000723 VPO N-000724 10x14 AL N-000731 FG N-000732 PL N-000733 VPO N-000734 14x20 AL N-000741 PL N-000743 VPO N-000744</p>	<p>3x5 VPO N-000814 7x10 AL N-000821 FG N-000822 PL N-000823 VPO N-000824 10x14 AL N-000831 FG N-000832 PL N-000833 VPO N-000834 14x20 AL N-000841 PL N-000843 VPO N-000844</p>	<p>3x5 VPO N-000914 7x10 AL N-000921 FG N-000922 PL N-000923 VPO N-000924 10x14 AL N-000931 FG N-000932 PL N-000933 VPO N-000934 14x20 AL N-000941 PL N-000943 VPO N-000944</p>	<p>3x5 VPO N-001014 7x10 AL N-001021 FG N-001022 PL N-001023 VPO N-001024 10x14 AL N-001031 FG N-001032 PL N-001033 VPO N-001034 14x20 AL N-001041 PL N-001043 VPO N-001044</p>	<p>3x5 VPO N-001314 7x10 AL N-001321 FG N-001322 PL N-001323 VPO N-001324 10x14 AL N-001331 FG N-001332 PL N-001333 VPO N-001334 14x20 AL N-001341 PL N-001343 VPO N-001344</p>

<p>NOTICE</p> <p>AUTHORIZED PERSONNEL ONLY BEYOND THIS POINT</p>	<p>NOTICE</p> <p>BE CAREFUL EVERY MACHINE IN THIS DEPARTMENT IS DANGEROUS</p>	<p>NOTICE</p> <p>BREATHING AIR EMERGENCY USE ONLY</p>	<p>NOTICE</p> <p>BREATHING AIR STATION</p>	<p>NOTICE</p> <p>BUCKLE UP FOR SAFETY</p>	<p>NOTICE</p> <p>CHAIN ALL CYLINDERS SECURELY</p>	<p>NOTICE</p> <p>CLEANING IN PROGRESS</p>
<p>3x5 VPO N-001514 7x10 AL N-001521 FG N-001522 PL N-001523 VPO N-001524 10x14 AL N-001531 FG N-001532 PL N-001533 VPO N-001534 14x20 AL N-001541 PL N-001543 VPO N-001544</p>	<p>3x5 VPO N-050114 7x10 AL N-050121 FG N-050122 PL N-050123 VPO N-050124 10x14 AL N-050131 FG N-050132 PL N-050133 VPO N-050134 14x20 AL N-050141 PL N-050143 VPO N-050144</p>	<p>3x5 VPO N-050214 7x10 AL N-050221 FG N-050222 PL N-050223 VPO N-050224 10x14 AL N-050231 FG N-050232 PL N-050233 VPO N-050234 14x20 AL N-050241 PL N-050243 VPO N-050244</p>	<p>3x5 VPO N-050314 7x10 AL N-050321 FG N-050322 PL N-050323 VPO N-050324 10x14 AL N-050331 FG N-050332 PL N-050333 VPO N-050334 14x20 AL N-050341 PL N-050343 VPO N-050344</p>	<p>3x5 VPO N-050414 7x10 AL N-050421 FG N-050422 PL N-050423 VPO N-050424 10x14 AL N-050431 FG N-050432 PL N-050433 VPO N-050434 14x20 AL N-050441 PL N-050443 VPO N-050444</p>	<p>3x5 VPO N-080114 7x10 AL N-080121 FG N-080122 PL N-080123 VPO N-080124 10x14 AL N-080131 FG N-080132 PL N-080133 VPO N-080134 14x20 AL N-080141 PL N-080143 VPO N-080144</p>	<p>3x5 VPO N-080214 7x10 AL N-080221 FG N-080222 PL N-080223 VPO N-080224 10x14 AL N-080231 FG N-080232 PL N-080233 VPO N-080234 14x20 AL N-080241 PL N-080243 VPO N-080244</p>

<p>NOTICE</p> <p>CYLINDERS MUST BE CHAINED AT ALL TIMES</p>	<p>NOTICE</p> <p>CYLINDERS NOT CONNECTED MUST BE CAPPED</p>	<p>NOTICE</p> <p>DO NOT BLOCK DOOR</p>	<p>NOTICE</p> <p>DO NOT BLOCK ALLEY</p>	<p>NOTICE</p> <p>DO NOT DEPOSIT SANITARY NAPKINS IN TOILET BOWLS USE CONTAINERS PROVIDED FOR THIS PURPOSE</p>	<p>NOTICE</p> <p>DO NOT DUMP CHEMICALS DOWN THIS DRAIN</p>	<p>NOTICE</p> <p>DO NOT OPERATE THIS EQUIPMENT WITHOUT EAR PROTECTION</p>
<p>3x5 VPO N-080314 7x10 AL N-080321 FG N-080322 PL N-080323 VPO N-080324 10x14 AL N-080331 FG N-080332 PL N-080333 VPO N-080334 14x20 AL N-080341 PL N-080343 VPO N-080344</p>	<p>3x5 VPO N-080414 7x10 AL N-080421 FG N-080422 PL N-080423 VPO N-080424 10x14 AL N-080431 FG N-080432 PL N-080433 VPO N-080434 14x20 AL N-080441 PL N-080443 VPO N-080444</p>	<p>3x5 VPO N-110314 7x10 AL N-110321 FG N-110322 PL N-110323 VPO N-110324 10x14 AL N-110331 FG N-110332 PL N-110333 VPO N-110334 14x20 AL N-110341 PL N-110343 VPO N-110344</p>	<p>3x5 VPO N-110214 7x10 AL N-110221 FG N-110222 PL N-110223 VPO N-110224 10x14 AL N-110231 FG N-110232 PL N-110233 VPO N-110234 14x20 AL N-110241 PL N-110243 VPO N-110244</p>	<p>3x5 VPO N-110414 7x10 AL N-110421 FG N-110422 PL N-110423 VPO N-110424 10x14 AL N-110431 FG N-110432 PL N-110433 VPO N-110434 14x20 AL N-110441 PL N-110443 VPO N-110444</p>	<p>3x5 VPO N-110514 7x10 AL N-110521 FG N-110522 PL N-110523 VPO N-110524 10x14 AL N-110531 FG N-110532 PL N-110533 VPO N-110534 14x20 AL N-110541 PL N-110543 VPO N-110544</p>	<p>3x5 VPO N-110614 7x10 AL N-110621 FG N-110622 PL N-110623 VPO N-110624 10x14 AL N-110631 FG N-110632 PL N-110633 VPO N-110634 14x20 AL N-110641 PL N-110643 VPO N-110644</p>

<p>NOTICE</p> <p>DO NOT PARK IN FRONT OF DOOR</p>	<p>NOTICE</p> <p>DO NOT TALK TO OPERATOR</p>	<p>NOTICE</p> <p>DO NOT THROW RUBBISH INTO THE TOILET BOWL</p>	<p>NOTICE</p> <p>DO NOT THROW RUBBISH INTO THE URINALS</p>	<p>NOTICE</p> <p>DO NOT THROW TRASH OR CIGARETTE BUTTS ON FLOOR</p>	<p>NOTICE</p> <p>DON'T RIDE ON THIS ELEVATOR IT IS FOR FREIGHT ONLY</p>	<p>NOTICE</p> <p>DOOR ALARMED OPEN ONLY FOR EMERGENCY EXIT</p>
<p>3x5 VPO N-110714 7x10 AL N-110721 FG N-110722 PL N-110723 VPO N-110724 10x14 AL N-110731 FG N-110732 PL N-110733 VPO N-110734 14x20 AL N-110741 PL N-110743 VPO N-110744</p>	<p>3x5 VPO N-110814 7x10 AL N-110821 FG N-110822 PL N-110823 VPO N-110824 10x14 AL N-110831 FG N-110832 PL N-110833 VPO N-110834 14x20 AL N-110841 PL N-110843 VPO N-110844</p>	<p>3x5 VPO N-110914 7x10 AL N-110921 FG N-110922 PL N-110923 VPO N-110924 10x14 AL N-110931 FG N-110932 PL N-110933 VPO N-110934 14x20 AL N-110941 PL N-110943 VPO N-110944</p>	<p>3x5 VPO N-111014 7x10 AL N-111021 FG N-111022 PL N-111023 VPO N-111024 10x14 AL N-111031 FG N-111032 PL N-111033 VPO N-111034 14x20 AL N-111041 PL N-111043 VPO N-111044</p>	<p>3x5 VPO N-111114 7x10 AL N-111121 FG N-111122 PL N-111123 VPO N-111124 10x14 AL N-111131 FG N-111132 PL N-111133 VPO N-111134 14x20 AL N-111141 PL N-111143 VPO N-111144</p>	<p>3x5 VPO N-111414 7x10 AL N-111421 FG N-111422 PL N-111423 VPO N-111424 10x14 AL N-111431 FG N-111432 PL N-111433 VPO N-111434 14x20 AL N-111441 PL N-111443 VPO N-111444</p>	<p>3x5 VPO N-111514 7x10 AL N-111521 FG N-111522 PL N-111523 VPO N-111524 10x14 AL N-111531 FG N-111532 PL N-111533 VPO N-111534 14x20 AL N-111541 PL N-111543 VPO N-111544</p>

THE SIGNS OF A SAFE INDUSTRY



NOTICE

NOTICE
DRIVERS SHOULD
STAY IN DESIGNATED
AREAS

- 3x5 VPO N-111614
- 7x10 AL N-111621
- FG N-111622
- PL N-111623
- VPO N-111624
- 10x14 AL N-111631
- FG N-111632
- PL N-111633
- VPO N-111634
- 14x20 AL N-111641
- PL N-111643
- VPO N-111644

NOTICE
DRUM
STORAGE
AREA

- 3x5 VPO N-111714
- 7x10 AL N-111721
- FG N-111722
- PL N-111723
- VPO N-111724
- 10x14 AL N-111731
- FG N-111732
- PL N-111733
- VPO N-111734
- 14x20 AL N-111741
- PL N-111743
- VPO N-111744

NOTICE
DRUMS MUST
BE LABELED

- 3x5 VPO N-111814
- 7x10 AL N-111821
- FG N-111822
- PL N-111823
- VPO N-111824
- 10x14 AL N-111831
- FG N-111832
- PL N-111833
- VPO N-111834
- 14x20 AL N-111841
- PL N-111843
- VPO N-111844

NOTICE
EAR AND EYE
PROTECTION
REQUIRED IN THIS
AREA

- 3x5 VPO N-160114
- 7x10 AL N-160121
- FG N-160122
- PL N-160123
- VPO N-160124
- 10x14 AL N-160131
- FG N-160132
- PL N-160133
- VPO N-160134
- 14x20 AL N-160141
- PL N-160143
- VPO N-160144

NOTICE
EAR PLUGS
REQUIRED
IN THIS AREA

- 3x5 VPO N-161514
- 7x10 AL N-161521
- FG N-161522
- PL N-161523
- VPO N-161524
- 10x14 AL N-161531
- FG N-161532
- PL N-161533
- VPO N-161534
- 14x20 AL N-161541
- PL N-161543
- VPO N-161544

NOTICE
EAR PROTECTION
REQUIRED
BEYOND THIS POINT

- 3x5 VPO N-160314
- 7x10 AL N-160321
- FG N-160322
- PL N-160323
- VPO N-160324
- 10x14 AL N-160331
- FG N-160332
- PL N-160333
- VPO N-160334
- 14x20 AL N-160341
- PL N-160343
- VPO N-160344

NOTICE
EAR PROTECTION
REQUIRED
IN THIS AREA

- 3x5 VPO N-160414
- 7x10 AL N-160421
- FG N-160422
- PL N-160423
- VPO N-160424
- 10x14 AL N-160431
- FG N-160432
- PL N-160433
- VPO N-160434
- 14x20 AL N-160441
- PL N-160443
- VPO N-160444

NOTICE
EAR PROTECTION
REQUIRED WHILE
EQUIPMENT IS
OPERATING

- 3x5 VPO N-160514
- 7x10 AL N-160521
- FG N-160522
- PL N-160523
- VPO N-160524
- 10x14 AL N-160531
- FG N-160532
- PL N-160533
- VPO N-160534
- 14x20 AL N-160541
- PL N-160543
- VPO N-160544

NOTICE
EMPLOYEES MUST
WASH HANDS WITH
SOAP BEFORE
RETURNING TO WORK

- 3x5 VPO N-160814
- 7x10 AL N-160821
- FG N-160822
- PL N-160823
- VPO N-160824
- 10x14 AL N-160831
- FG N-160832
- PL N-160833
- VPO N-160834
- 14x20 AL N-160841
- PL N-160843
- VPO N-160844

NOTICE
ENTRANCE FOR
EMPLOYEES ONLY

- 3x5 VPO N-161014
- 7x10 AL N-161021
- FG N-161022
- PL N-161023
- VPO N-161024
- 10x14 AL N-161031
- FG N-161032
- PL N-161033
- VPO N-161034
- 14x20 AL N-161041
- PL N-161043
- VPO N-161044

NOTICE
EVACUATION
ALARM

- 3x5 VPO N-161214
- 7x10 AL N-161221
- FG N-161222
- PL N-161223
- VPO N-161224
- 10x14 AL N-161231
- FG N-161232
- PL N-161233
- VPO N-161234
- 14x20 AL N-161241
- PL N-161243
- VPO N-161244

NOTICE
EYE PROTECTION
AREA
CONTACT LENSES
NOT ALLOWED

- 3x5 VPO N-161314
- 7x10 AL N-161321
- FG N-161322
- PL N-161323
- VPO N-161324
- 10x14 AL N-161331
- FG N-161332
- PL N-161333
- VPO N-161334
- 14x20 AL N-161341
- PL N-161343
- VPO N-161344

NOTICE
EYE PROTECTION
REQUIRED
IN THIS AREA

- 3x5 VPO N-964114
- 7x10 AL N-964121
- FG N-964122
- PL N-964123
- VPO N-964124
- 10x14 AL N-964131
- FG N-964132
- PL N-964133
- VPO N-964134
- 14x20 AL N-964141
- PL N-964143
- VPO N-964144

NOTICE
EYE WASH
AND
SHOWER

- 3x5 VPO N-161414
- 7x10 AL N-161421
- FG N-161422
- PL N-161423
- VPO N-161424
- 10x14 AL N-161431
- FG N-161432
- PL N-161433
- VPO N-161434
- 14x20 AL N-161441
- PL N-161443
- VPO N-161444

NOTICE
FACE SHIELD AND
GOGGLES MUST BE
WORN IN THIS AREA

- 3x5 VPO N-260114
- 7x10 AL N-260121
- FG N-260122
- PL N-260123
- VPO N-260124
- 10x14 AL N-260131
- FG N-260132
- PL N-260133
- VPO N-260134
- 14x20 AL N-260141
- PL N-260143
- VPO N-260144

NOTICE
FACE SHIELD
MUST BE WORN
IN THIS AREA

- 3x5 VPO N-260214
- 7x10 AL N-260221
- FG N-260222
- PL N-260223
- VPO N-260224
- 10x14 AL N-260231
- FG N-260232
- PL N-260233
- VPO N-260234
- 14x20 AL N-260241
- PL N-260243
- VPO N-260244

NOTICE
FEDERAL REGULATIONS
REQUIRE THAT NO FOOD
BE STORED OR EATEN
IN RESTROOM

- 3x5 VPO N-260414
- 7x10 AL N-260421
- FG N-260422
- PL N-260423
- VPO N-260424
- 10x14 AL N-260431
- FG N-260432
- PL N-260433
- VPO N-260434
- 14x20 AL N-260441
- PL N-260443
- VPO N-260444

NOTICE
\$50.00 REWARD
FOR INFORMATION LEADING
TO THE ARREST AND CONVICTION
OF ANY PERSON MALICIOUSLY
DESTROYING OR DAMAGING THIS
COMPANY'S PROPERTY

- 3x5 VPO N-260514
- 7x10 AL N-260521
- FG N-260522
- PL N-260523
- VPO N-260524
- 10x14 AL N-260531
- FG N-260532
- PL N-260533
- VPO N-260534
- 14x20 AL N-260541
- PL N-260543
- VPO N-260544

NOTICE
FOR SANITARY REASONS
YOU ARE REQUESTED TO
HELP KEEP THIS PLACE CLEAN
REPORT ANYTHING
OUT OF ORDER

- 3x5 VPO N-260614
- 7x10 AL N-260621
- FG N-260622
- PL N-260623
- VPO N-260624
- 10x14 AL N-260631
- FG N-260632
- PL N-260633
- VPO N-260634
- 14x20 AL N-260641
- PL N-260643
- VPO N-260644

NOTICE
GLOVES AND
FACESHIELDS
MUST BE USED WHEN
CLEANING EQUIPMENT

- 3x5 VPO N-360114
- 7x10 AL N-360121
- FG N-360122
- PL N-360123
- VPO N-360124
- 10x14 AL N-360131
- FG N-360132
- PL N-360133
- VPO N-360134
- 14x20 AL N-360141
- PL N-360143
- VPO N-360144

NOTICE
GOGGLES REQUIRED
BEYOND THIS
POINT

- 3x5 VPO N-360214
- 7x10 AL N-360221
- FG N-360222
- PL N-360223
- VPO N-360224
- 10x14 AL N-360231
- FG N-360232
- PL N-360233
- VPO N-360234
- 14x20 AL N-360241
- PL N-360243
- VPO N-360244

NOTICE
GOGGLES REQUIRED
WHEN USING
GRINDER

- 3x5 VPO N-360314
- 7x10 AL N-360321
- FG N-360322
- PL N-360323
- VPO N-360324
- 10x14 AL N-360331
- FG N-360332
- PL N-360333
- VPO N-360334
- 14x20 AL N-360341
- PL N-360343
- VPO N-360344

NOTICE
HAIR NET REQUIRED
BEYOND THIS
POINT

- 3x5 VPO N-370114
- 7x10 AL N-370121
- FG N-370122
- PL N-370123
- VPO N-370124
- 10x14 AL N-370131
- FG N-370132
- PL N-370133
- VPO N-370134
- 14x20 AL N-370141
- PL N-370143
- VPO N-370144

NOTICE
HARD HATS AND
SAFETY GLASSES
REQUIRED BEYOND
THIS POINT

- 3x5 VPO N-370314
- 7x10 AL N-370321
- FG N-370322
- PL N-370323
- VPO N-370324
- 10x14 AL N-370331
- FG N-370332
- PL N-370333
- VPO N-370334
- 14x20 AL N-370341
- PL N-370343
- VPO N-370344

NOTICE
HARD HATS MUST
BE WORN
IN THIS AREA

- 3x5 VPO N-370414
- 7x10 AL N-370421
- FG N-370422
- PL N-370423
- VPO N-370424
- 10x14 AL N-370431
- FG N-370432
- PL N-370433
- VPO N-370434
- 14x20 AL N-370441
- PL N-370443
- VPO N-370444

NOTICE
HARD HATS
REQUIRED
BEYOND THIS POINT

- 3x5 VPO N-370614
- 7x10 AL N-370621
- FG N-370622
- PL N-370623
- VPO N-370624
- 10x14 AL N-370631
- FG N-370632
- PL N-370633
- VPO N-370634
- 14x20 AL N-370641
- PL N-370643
- VPO N-370644

NOTICE
HARD HATS
REQUIRED
IN THIS AREA

- 3x5 VPO N-370714
- 7x10 AL N-370721
- FG N-370722
- PL N-370723
- VPO N-370724
- 10x14 AL N-370731
- FG N-370732
- PL N-370733
- VPO N-370734
- 14x20 AL N-370741
- PL N-370743
- VPO N-370744

NOTICE
HAZARDOUS MATERIAL
STORAGE AREA
AUTHORIZED PERSONNEL
ONLY

- 3x5 VPO N-370814
- 7x10 AL N-370821
- FG N-370822
- PL N-370823
- VPO N-370824
- 10x14 AL N-370831
- FG N-370832
- PL N-370833
- VPO N-370834
- 14x20 AL N-370841
- PL N-370843
- VPO N-370844

NOTICE

THE SIGNS OF A SAFE INDUSTRY



<p>NOTICE</p> <p>HAZARDOUS MATERIAL STORAGE AREA UNAUTHORIZED PERSONS KEEP OUT</p>	<p>NOTICE</p> <p>HAZARDOUS WASTE MATERIALS ONLY</p>	<p>NOTICE</p> <p>HEARING PROTECTION REQUIRED IN THIS AREA</p>	<p>NOTICE</p> <p>HEARING PROTECTION AND SAFETY GLASSES MUST BE WORN IN THIS AREA</p>	<p>NOTICE</p> <p>HELP KEEP RESTROOM CLEAN</p>	<p>NOTICE</p> <p>HELP KEEP THIS PLACE CLEAN</p>	<p>NOTICE</p> <p>IF YOU USE THIS MACHINE CLEAN IT</p>
<p>3X5 VPO N-370914 7x10 AL N-370921 FG N-370922 PL N-370923 VPO N-370924</p> <p>10x14 AL N-370931 FG N-370932 PL N-370933 VPO N-370934</p> <p>14x20 AL N-370941 PL N-370943 VPO N-370944</p>	<p>3X5 VPO N-371014 7x10 AL N-371021 FG N-371022 PL N-371023 VPO N-371024</p> <p>10x14 AL N-371031 FG N-371032 PL N-371033 VPO N-371034</p> <p>14x20 AL N-371041 PL N-371043 VPO N-371044</p>	<p>3X5 VPO N-371114 7x10 AL N-371121 FG N-371122 PL N-371123 VPO N-371124</p> <p>10x14 AL N-371131 FG N-371132 PL N-371133 VPO N-371134</p> <p>14x20 AL N-371141 PL N-371143 VPO N-371144</p>	<p>3X5 VPO N-371714 7x10 AL N-371721 FG N-371722 PL N-371723 VPO N-371724</p> <p>10x14 AL N-371731 FG N-371732 PL N-371733 VPO N-371734</p> <p>14x20 AL N-371741 PL N-371743 VPO N-371744</p>	<p>3X5 VPO N-371214 7x10 AL N-371221 FG N-371222 PL N-371223 VPO N-371224</p> <p>10x14 AL N-371231 FG N-371232 PL N-371233 VPO N-371234</p> <p>14x20 AL N-371241 PL N-371243 VPO N-371244</p>	<p>3X5 VPO N-371414 7x10 AL N-371421 FG N-371422 PL N-371423 VPO N-371424</p> <p>10x14 AL N-371431 FG N-371432 PL N-371433 VPO N-371434</p> <p>14x20 AL N-371441 PL N-371443 VPO N-371444</p>	<p>3X5 VPO N-420214 7x10 AL N-420221 FG N-420222 PL N-420223 VPO N-420224</p> <p>10x14 AL N-420231 FG N-420232 PL N-420233 VPO N-420234</p> <p>14x20 AL N-420241 PL N-420243 VPO N-420244</p>

<p>NOTICE</p> <p>JANITOR AT WORK</p>	<p>NOTICE</p> <p>KEEP DOOR CLOSED AT ALL TIMES</p>	<p>NOTICE</p> <p>KEEP DOOR CLOSED TEMPERATURE CONTROLLED</p>	<p>NOTICE</p> <p>KEEP GATE CLOSED</p>	<p>NOTICE</p> <p>KEEP GUARDS IN PLACE</p>	<p>NOTICE</p> <p>KEEP THIS AREA CLEAR</p>	<p>NOTICE</p> <p>KEEP THIS DOOR CLOSED</p>
<p>3X5 VPO N-420514 7x10 AL N-420521 FG N-420522 PL N-420523 VPO N-420524</p> <p>10x14 AL N-420531 FG N-420532 PL N-420533 VPO N-420534</p> <p>14x20 AL N-420541 PL N-420543 VPO N-420544</p>	<p>3X5 VPO N-440314 7x10 AL N-440321 FG N-440322 PL N-440323 VPO N-440324</p> <p>10x14 AL N-440331 FG N-440332 PL N-440333 VPO N-440334</p> <p>14x20 AL N-440341 PL N-440343 VPO N-440344</p>	<p>3X5 VPO N-440414 7x10 AL N-440421 FG N-440422 PL N-440423 VPO N-440424</p> <p>10x14 AL N-440431 FG N-440432 PL N-440433 VPO N-440434</p> <p>14x20 AL N-440441 PL N-440443 VPO N-440444</p>	<p>3X5 VPO N-440514 7x10 AL N-440521 FG N-440522 PL N-440523 VPO N-440524</p> <p>10x14 AL N-440531 FG N-440532 PL N-440533 VPO N-440534</p> <p>14x20 AL N-440541 PL N-440543 VPO N-440544</p>	<p>3X5 VPO N-440614 7x10 AL N-440621 FG N-440622 PL N-440623 VPO N-440624</p> <p>10x14 AL N-440631 FG N-440632 PL N-440633 VPO N-440634</p> <p>14x20 AL N-440641 PL N-440643 VPO N-440644</p>	<p>3X5 VPO N-440814 7x10 AL N-440821 FG N-440822 PL N-440823 VPO N-440824</p> <p>10x14 AL N-440831 FG N-440832 PL N-440833 VPO N-440834</p> <p>14x20 AL N-440841 PL N-440843 VPO N-440844</p>	<p>3X5 VPO N-440914 7x10 AL N-440921 FG N-440922 PL N-440923 VPO N-440924</p> <p>10x14 AL N-440931 FG N-440932 PL N-440933 VPO N-440934</p> <p>14x20 AL N-440941 PL N-440943 VPO N-440944</p>

<p>NOTICE</p> <p>KEEP THIS DOOR CLOSED AT ALL TIMES</p>	<p>NOTICE</p> <p>KEEP THIS PASSAGEWAY CLEAR</p>	<p>NOTICE</p> <p>LIGHTS MUST BE TURNED OFF DURING NON-WORKING HOURS</p>	<p>NOTICE</p> <p>MATERIAL SAFETY DATA SHEETS AVAILABLE UPON REQUEST</p>	<p>NOTICE</p> <p>MATERIAL SAFETY DATA SHEETS AND THE WRITTEN HAZARD COMMUNICATION PROGRAM LOCATED HERE</p>	<p>NOTICE</p> <p>NO ADMITTANCE BEYOND THIS POINT</p>	<p>NOTICE</p> <p>NO ADMITTANCE EMPLOYEES AND AUTHORIZED PERSONNEL ONLY</p>
<p>3X5 VPO N-441014 7x10 AL N-441021 FG N-441022 PL N-441023 VPO N-441024</p> <p>10x14 AL N-441031 FG N-441032 PL N-441033 VPO N-441034</p> <p>14x20 AL N-441041 PL N-441043 VPO N-441044</p>	<p>3X5 VPO N-441114 7x10 AL N-441121 FG N-441122 PL N-441123 VPO N-441124</p> <p>10x14 AL N-441131 FG N-441132 PL N-441133 VPO N-441134</p> <p>14x20 AL N-441141 PL N-441143 VPO N-441144</p>	<p>3X5 VPO N-450214 7x10 AL N-450221 FG N-450222 PL N-450223 VPO N-450224</p> <p>10x14 AL N-450231 FG N-450232 PL N-450233 VPO N-450234</p> <p>14x20 AL N-450241 PL N-450243 VPO N-450244</p>	<p>3X5 VPO N-990214 7x10 AL N-990221 FG N-990222 PL N-990223 VPO N-990224</p> <p>10x14 AL N-990231 FG N-990232 PL N-990233 VPO N-990234</p> <p>14x20 AL N-990241 PL N-990243 VPO N-990244</p>	<p>3X5 VPO N-460314 7x10 AL N-460321 FG N-460322 PL N-460323 VPO N-460324</p> <p>10x14 AL N-460331 FG N-460332 PL N-460333 VPO N-460334</p> <p>14x20 AL N-460341 PL N-460343 VPO N-460344</p>	<p>3X5 VPO N-470114 7x10 AL N-470121 FG N-470122 PL N-470123 VPO N-470124</p> <p>10x14 AL N-470131 FG N-470132 PL N-470133 VPO N-470134</p> <p>14x20 AL N-470141 PL N-470143 VPO N-470144</p>	<p>3X5 VPO N-470214 7x10 AL N-470221 FG N-470222 PL N-470223 VPO N-470224</p> <p>10x14 AL N-470231 FG N-470232 PL N-470233 VPO N-470234</p> <p>14x20 AL N-470241 PL N-470243 VPO N-470244</p>

<p>NOTICE</p> <p>NO ADMITTANCE EMPLOYEES ONLY</p>	<p>NOTICE</p> <p>NO ALCOHOLIC BEVERAGES OR DRUGS PERMITTED ON COMPANY PROPERTY THIS INCLUDES THE PARKING LOT</p>	<p>NOTICE</p> <p>NO BEVERAGES OR FOOD ALLOWED IN THIS AREA</p>	<p>NOTICE</p> <p>NO CONTACT LENSES BEYOND THIS POINT</p>	<p>NOTICE</p> <p>NO EATING OF FOOD, NO DRINKING OF BEVERAGES, NO USING TOBACCO IN ANY FORM IN MANUFACTURING AREAS</p>	<p>NOTICE</p> <p>NO EATING OF FOOD, NO DRINKING OF BEVERAGES, NO USING OF TOBACCO IN ANY FORM IN THIS AREA</p>	<p>NOTICE</p> <p>NO EATING OR DRINKING IN THIS AREA</p>
<p>3X5 VPO N-470314 7x10 AL N-470321 FG N-470322 PL N-470323 VPO N-470324</p> <p>10x14 AL N-470331 FG N-470332 PL N-470333 VPO N-470334</p> <p>14x20 AL N-470341 PL N-470343 VPO N-470344</p>	<p>3X5 VPO N-470614 7x10 AL N-470621 FG N-470622 PL N-470623 VPO N-470624</p> <p>10x14 AL N-470631 FG N-470632 PL N-470633 VPO N-470634</p> <p>14x20 AL N-470641 PL N-470643 VPO N-470644</p>	<p>3X5 VPO N-470914 7x10 AL N-470921 FG N-470922 PL N-470923 VPO N-470924</p> <p>10x14 AL N-470931 FG N-470932 PL N-470933 VPO N-470934</p> <p>14x20 AL N-470941 PL N-470943 VPO N-470944</p>	<p>3X5 VPO N-471114 7x10 AL N-471121 FG N-471122 PL N-471123 VPO N-471124</p> <p>10x14 AL N-471131 FG N-471132 PL N-471133 VPO N-471134</p> <p>14x20 AL N-471141 PL N-471143 VPO N-471144</p>	<p>3X5 VPO N-471214 7x10 AL N-471221 FG N-471222 PL N-471223 VPO N-471224</p> <p>10x14 AL N-471231 FG N-471232 PL N-471233 VPO N-471234</p> <p>14x20 AL N-471241 PL N-471243 VPO N-471244</p>	<p>3X5 VPO N-471314 7x10 AL N-471321 FG N-471322 PL N-471323 VPO N-471324</p> <p>10x14 AL N-471331 FG N-471332 PL N-471333 VPO N-471334</p> <p>14x20 AL N-471341 PL N-471343 VPO N-471344</p>	<p>3X5 VPO N-471414 7x10 AL N-471421 FG N-471422 PL N-471423 VPO N-471424</p> <p>10x14 AL N-471431 FG N-471432 PL N-471433 VPO N-471434</p> <p>14x20 AL N-471441 PL N-471443 VPO N-471444</p>